




# 5G LTE Network Extender 4 for Enterprise - Installation Reference Guide




## Cautions and Warnings

 **Warning:** Read and understand the installation instructions and all safety warnings before connecting the Network Extender to the power source. Failure to understand safety precautions may result in injury.

 **Warning:** Operate the Network Extender only with the power adapter supplied with the product.

 **Warning:** Do not cover the Network Extender or block the airflow to the device with any objects.

 **California Prop65 Warning:** The plastic and cords on this product contain phthalates, a chemical known to the State of California to cause cancer, birth defects and other reproductive harm. Wash hands after handling. For more information, please visit the following site: [www.p65warnings.ca.gov](http://www.p65warnings.ca.gov)

## USA: Federal Communications Commission (FCC) statement

This device complies with FCC part 15 FCC Rules.

Operation is subject to the following two conditions:

1. This device may not cause harmful interference and
2. This device must accept any interference, including interference that may cause undesired operation of the device.

## FCC Warning:

Changes or modifications not expressly approved by the party responsible for compliance could void the user's authority to operate the equipment. Note: This equipment has been tested and found to comply with the limits for a Class B digital device, pursuant to part 15 of the FCC Rules. These limits are designed to provide reasonable protection against harmful interference in a residential installation. This equipment generates, uses, and can radiate radio frequency energy and, if not installed and used in accordance with the instructions, may cause harmful interference to radio communications.

However, there is no guarantee that interference will not occur in a particular installation. If this equipment does cause harmful interference to radio or television reception, which can be determined by turning the equipment off and on, the user is encouraged to try to correct the interference by one or more of the following measures:

- Reorient or relocate the receiving antenna.
- Increase the separation between the equipment and receiver.
- Connect the equipment into an outlet on a circuit different from that to which the receiver is connected.
- Consult the dealer or an experienced radio/TV technician for help.

This device meets the FCC and IC requirements for RF exposure in public or uncontrolled environments.

FCCID: 2AO385G2101-48

## 1. In-box Contents

The box contains the following components:

- 5G LTE Network Extender
- Mounting Bracket with Hardware
- GPS Antenna and cable – 7.0m
- Ethernet cable – 2.0m
- Power supply (not plenum rated) with 1.5m cable
- Quick Reference Card

## 2. Prerequisites

### Firewall

See the Network Extender User Guide for Enterprise Firewall settings.

### Ethernet and Backhaul (B/H) Requirements

An internet connection of greater than 100 mbps is recommended. For optimum performance regarding backhaul bandwidth requirements, please refer to the Network Extender User Guide.

### GPS Signal

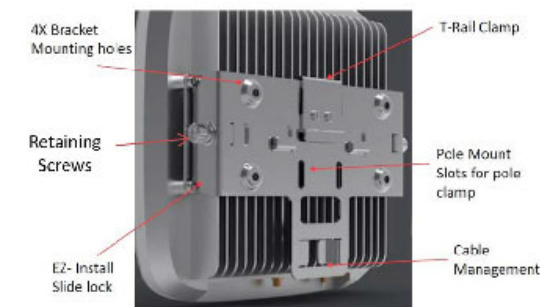
The Network Extender requires a strong GPS signal from the provided indoor GPS antenna. For installation other than with the provided GPS antenna, please refer to the Network Extender User Guide.

### PoE Port (Optional)

When power is supplied through the PoE port, the PoE power source must meet Class 5 (PoE++) requirements (refer to the Network Extender User Guide for more information).

## 3. Mounting

The package contains screws and anchors for drywall mounting. Installation on alternate surfaces will require the purchase of the appropriate anchors and hardware.



### Placement

- The Network Extender can be installed: vertically or horizontally on a wall, floor, or ceiling.
- Place the unit at least 10 feet away from products that generate electromagnetic radiation (e.g., microwave oven).
- Identify a location for the Network Extender, central to users, but no more than 21 feet from an exterior window or wall to allow for a strong GPS signal.
- Identify a power source for the Network Extender.

### Procedure

1. Determine the mounting location and verify that no wires, pipes, etc. are directly behind or in the wall at the point of mounting.
2. Use the wall mounting bracket to act as a template to mark anchor holes on the wall.
3. Drill holes into drywall and push in the supplied plastic drywall anchors.
4. Align the mounting bracket with the wall anchors and attach using the supplied screws.
5. Slide the Network Extender with mounting bracket into the wall mounting bracket.
6. Fasten retaining screws (Phillips #2) on the side of the bracket.



Casa Model: ESM4G5G1B

Copyright 2023 Verizon Wireless. All rights reserved.

DOC-3720 Rev 4.0