

# Verizon Connect Reveal features

**A total fleet platform that includes vehicle and asset tracking tools, Integrated Video dashcams and more**



If you're looking to keep track of fleet safety, compliance and productivity, Verizon Connect Reveal is a complete software solution that helps manage your vehicles, drivers, jobs and assets. Reveal takes your fleet data and gives you meaningful insights to help you make better-informed decisions for your business.

## **Our award-winning user interface offers maps, dashboards, graphs and reports to help you take action:**

- Cut costs by reducing idling and unnecessary fuel use
- Promote safety by coaching drivers and showing them where they can improve
- Increase productivity with better routes and visibility into fleet activities

## **Reveal perks include:**

- Access to your software on any web browser and easy self-installation of your hardware
- A suite of mobile apps to manage your business from home or the field
- One system, one login to access your entire fleet

## **Contents**

Live map .....	2
Route replay .....	2
Dashboards and scorecards .....	3
Alerts .....	3
Reports .....	4
Geofencing .....	5
Peripherals .....	5
Mobile app .....	6
Vehicle maintenance .....	7
Integrated Video .....	8
Asset tracking .....	9
Logbook for Reveal .....	10
Driver Vehicle Inspection Report .....	10
Hardware .....	11
Why choose Verizon Connect .....	11

## Live map

### See where all your vehicles are in near real time

- Dispatch more efficiently
- Improve response times
- Reduce the time spent calling drivers for updates

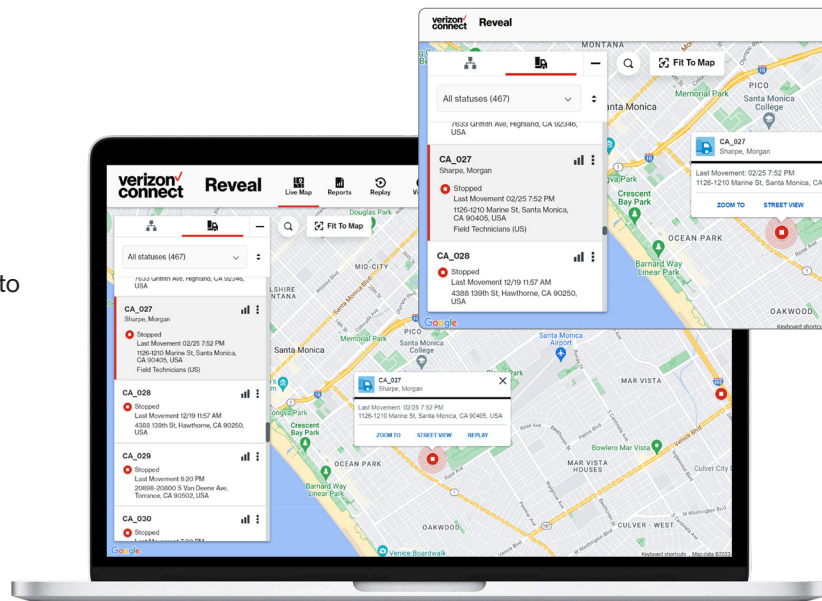
### Solve problems fast and stay on schedule

The vehicle status pane shows you everything you need to know about any driver or vehicle at a glance.

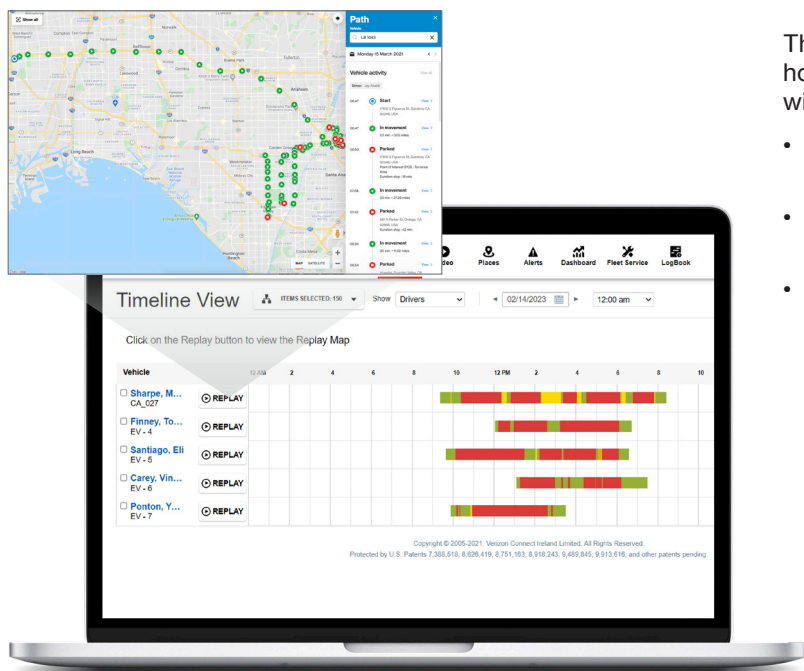
- Find the nearest vehicles
- Save a special location
- Send directions to your team



Find location and availability of Morgan



Show replay of James's path



## Route replay

This feature helps you spot early starts or finishes and off-hours activity. You can watch a trip from startup to shutdown with an interactive display of vehicle and driver activity.

- See color-coded vehicle status, which highlights long stops and excessive idling
- View interactive timeline segments for location and trip details
- Drill down into full replay mode for one or multiple vehicles

## Dashboards and scorecards

Reveal tracks hours spent and miles driven and translates that into dollars. See how an inefficient route can impact payroll expenses or see a display of your team's performance using your operational costs.

Driver behavior can impact your bottom line. Our dashboard translates data points into insights that matter to your business, including:

- After-hours driving
- Modeled payroll expense
- Safety scores
- Vehicle maintenance expense
- Wasted fuel

Show detailed view of driver safety scores

**Set driver performance standards**

Measuring your team against benchmarks shows you how each driver is doing compared to others. You can see who your top and bottom performers are with stack rankings, and driver scorecards provide data that helps you coach for better behaviors. Scorecards can also be used to create a driver safety program with incentives to improve scores.



## Alerts

Instant alerts help you correct a situation with a vehicle or driver when something goes wrong.

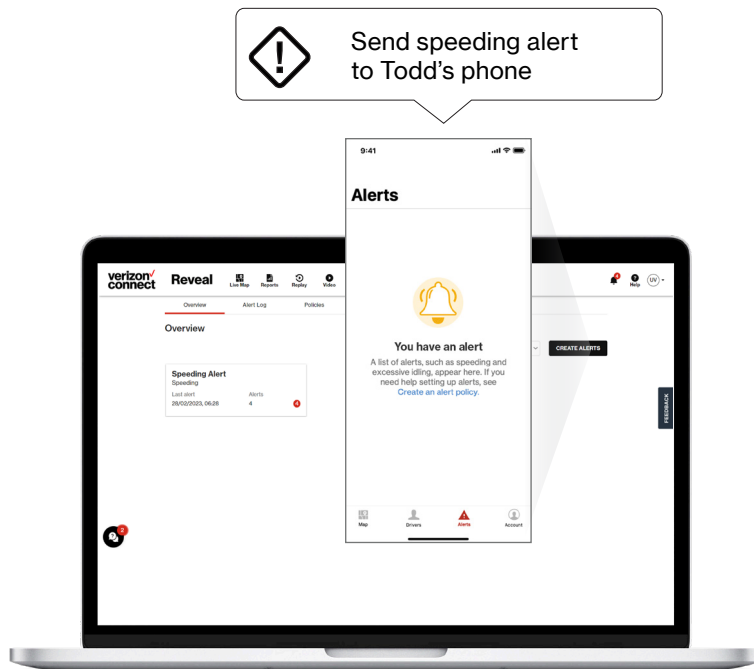
By setting a policy, you'll receive an alert the moment unwanted behaviors occur, such as speeding, extended idling or entering forbidden areas. Policy types that would trigger an alert can be based on activity, idling, geofencing, harsh driving and ignition.

You control who receives alerts, which alerts they get and how they receive them. You can also deliver alerts directly to drivers via email or text.

Send speeding alert to Todd's phone

**Some alert types include:**

- Inactivity
- Late start
- Sensor activation
- Speeding
- Towing
- Dashcam footage
- Geofence activity



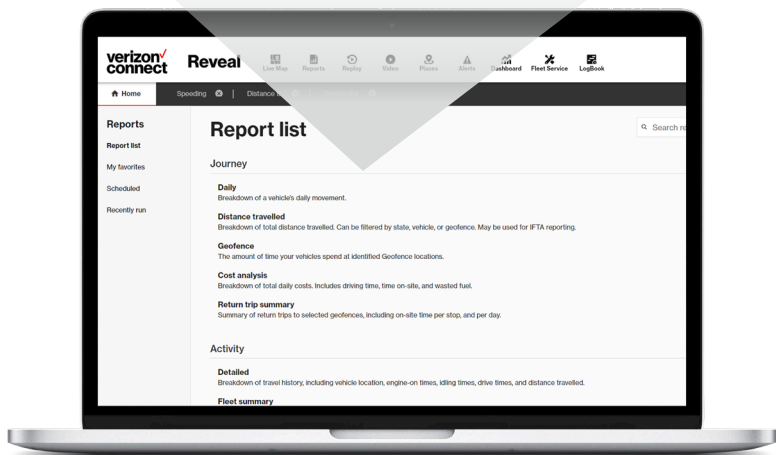
## Reports

Reveal gives you access to reports that provide a good story, so better decisions can be made by business owners, fleet managers and other staff.

Reveal lets you match each driver to their vehicle, so your data is accurate. It also delivers reports to your inbox based on your preferences, whether that's daily, weekly or quarterly. The reports are scannable and allow you to click into more detail when needed. Share reports with coworkers and give them the appropriate access level based on responsibilities.



Daily Report						
Created: 02/28/2023 8:12 AM						
Report Totals for: 02/21/2023 - 02/21/2023						
Total Stop Duration:	12h 42m	Total Idle Time:	24m	Total Travel Duration:	3h 59m	
Total Distance Traveled (miles):	129	Average Stop Duration:	51m	Number of Stops:	15	
<b>CA_042</b>						
START TIME	DISTANCE TRAVELED	STOP LOCATION	ARRIVAL TIME	IDLE DURATION	STOP DURATION	
Starting from: 2900-2908 Pommeroy Ave, Los Angeles, CA 90033, USA						
02/27/2023	14.79 mi 37m 33s	8904 La Tijera Blvd, Los Angeles, CA 90045, USA	7:01 AM	00m 00s	01m 56s	
6:23 AM PST						
7:03 AM	0.12 mi 02m 03s	S La Tijera Blvd, Los Angeles, CA 90045, USA	7:05 AM	00m 00s	00m 27s	
7:05 AM	1.35 mi 04m 28s	W Centinela Ave, Culver City, CA 90230, USA	7:10 AM	00m 00s	00m 12s	
7:10 AM	8.27 mi 04m 53s	Client Corp L43 6327 Arizona Pl, Los Angeles, CA 90045, USA	7:15 AM	11m 25s	25m 29s	
7:40 AM	0.16 mi 02m 21s	6300-6316 Arizona Cir, Los Angeles, CA 90045, USA	7:43 AM	07m 35s	4h 08m 04s	
11:51 AM	1.56 mi 05m 43s	5300 W Centinela Ave, Los Angeles, CA 90045, USA	11:56 AM	00m 00s	35m 53s	
12:32 PM	0.23 mi 03m 54s	S La Tijera Blvd, Los Angeles, CA 90045, USA	12:36 PM	00m 00s	01m 17s	



### Types of reports

Talk to your Sales Team for a complete list of all reports available.



#### Journey Reports

- Daily Report
- Distance Traveled Report
- Geofence Report
- Cost Analysis Report
- Return Trip Summary Report



#### Admin Reports

- Daily Timecard Report
- Weekly Timesheet Report
- Payroll Summary Report
- User Activity Report



#### Safety Reports

- Speeding Report
- Driving Style Summary Report
- Harsh Driving Incident Report
- Exception Report



#### Fuel Reports

- Fuel Efficiency Report
- Fuel Purchased Report
- Lost Fuel Report
- Carbon Footprint Report



#### Vehicle and Asset Health Reports

- Asset Tracker Battery Report
- Vehicle Maintenance Report
- Emission System Report



#### Activity Reports

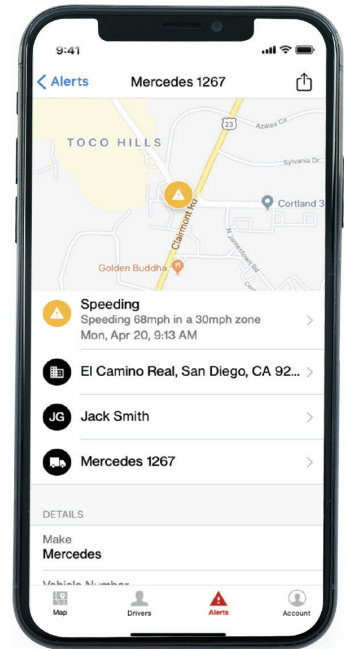
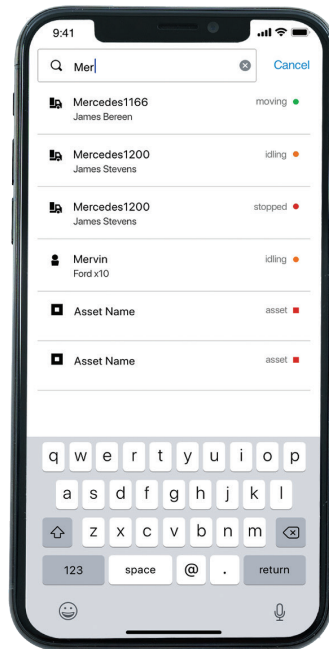
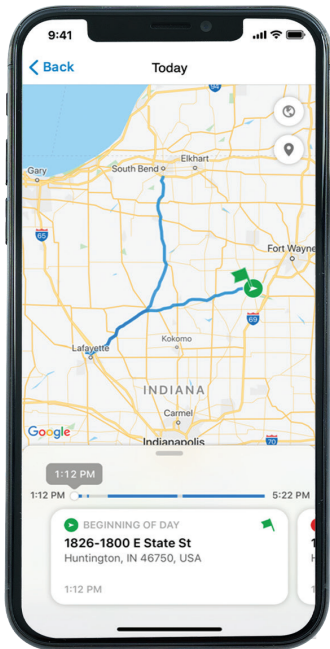
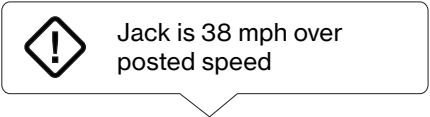
- Detailed Report
- Utilization Report
- Fleet Summary Report
- Custom Summary Report
- Sensor Report
- Proximity Report
- EV Summary Report



## Mobile app

With the Spotlight Mobile App for Reveal, you can see the live location of all vehicles and monitor driver activities, so you can always be in the know about the status of your fleet.

- View all vehicles and assets on a live map
- Locate any driver and see more about their status
- See vehicle activity and route history
- Receive alerts on driver behaviors, including speeding and hard braking



## Vehicle maintenance

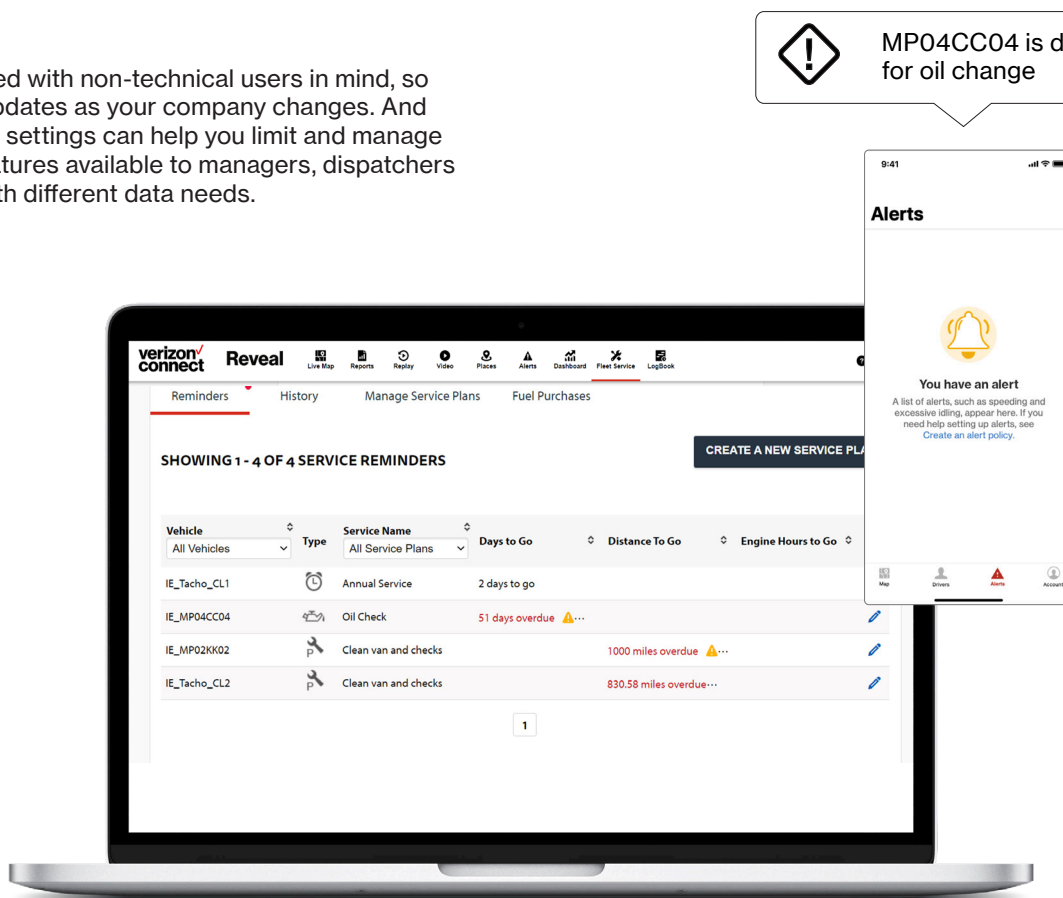
Vehicle maintenance is too often left to drivers to remember. Reveal helps you coordinate and manage your vehicle maintenance needs with:

- Scheduled reminders and alerts when your vehicles are due for service
- Service tracking by date, mileage or engine hours
- Vehicle use and fuel consumption logging

### Setup and use

Reveal was designed with non-technical users in mind, so it's easy to make updates as your company changes. And simple permissions settings can help you limit and manage information and features available to managers, dispatchers and supervisors with different data needs.

The Reveal platform is easy to access without needing installation, maintenance or updates to download. Our intuitive user interface with clear icons at the top helps you navigate the system with ease.



## Integrated Video (add-on solution)

Integrated Video provides road- and driver-facing dashcams with built-in AI to help reduce accidents and promote safe driving.

### Create a culture of safety and coach drivers using real video footage in context

- Automatically send audible in-cab alerts in real time to address potentially risky situations, like talking on the phone or smoking while driving, and when nearing a pedestrian or cyclist
- Review dangerous events, like tailgating, falling asleep, looking away from the road, hard braking or rapid acceleration
- Coach your crew on how to avoid distracted driving

### Help mitigate liability

False accident claims can cost a fleet a huge amount of time and money. Integrated Video provides reliable video evidence alongside fleet data to help save time, exonerate drivers and reduce unnecessary expenses.

- Watch driver-facing and road-facing video footage side by side to get the whole story
- Request on-demand video clips from a specific date and time from the footage available on your SD card
- Download, save and share your videos; Reveal stores them for 90 days

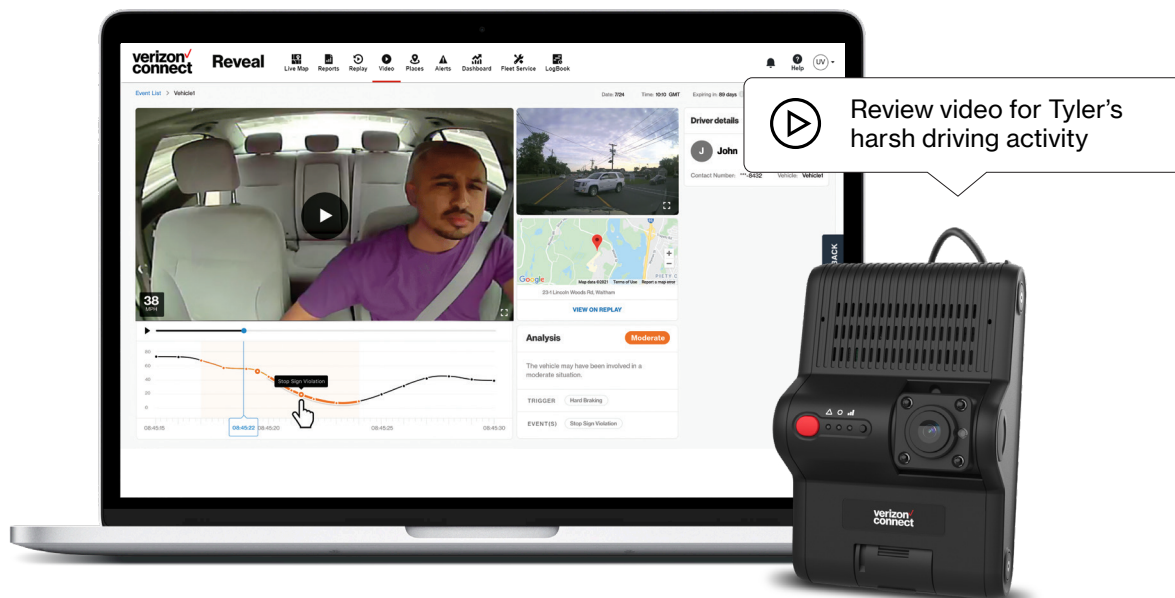
### Get classifications backed by Verizon Connect proprietary AI

- Understand the severity of an event and respond appropriately
- Set up notifications to alert appropriate team members



I started to understand that I had an advocate, that the camera could help me out of a bad situation.”

**Alan Brewster**  
Driver  
B.A.M. Trucking



## Asset tracking (add-on solution)

Track your expensive equipment and assets on the live map to help improve visibility, security and utilization.

### Powered asset tracking

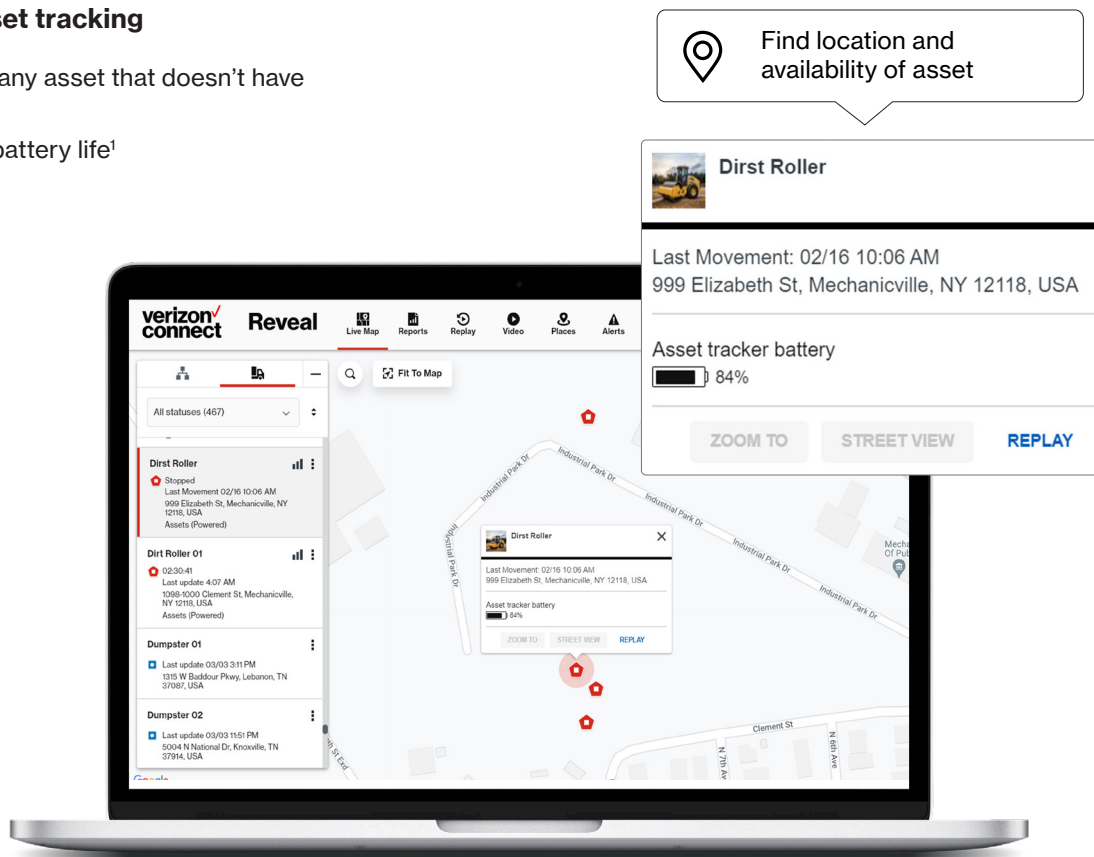
- Receive engine on/off alerts
- Set up geofences to track movements
- Track idling time
- Enjoy a five-year battery life backup<sup>1</sup>

### Nonpowered asset tracking

- Track just about any asset that doesn't have a power source
- Enjoy a 10-year battery life<sup>1</sup>

### Asset examples

- Trailers
- Generators
- Containers
- Tractors
- Loaders
- Lawn equipment



1. Battery life is estimated for use under optimal conditions. Factors such as low network signal strength, obstacles and temperature can reduce battery life.

## Logbook for Reveal (add-on solution)

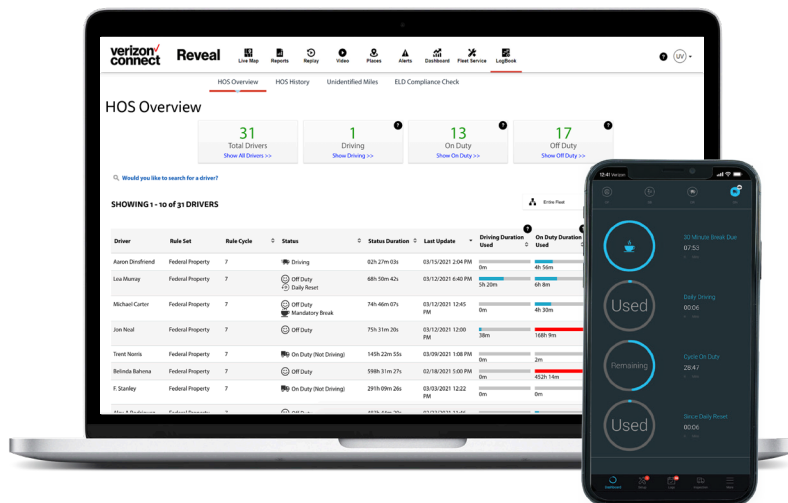
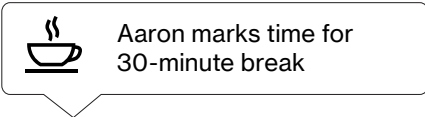
Manage your ELD compliance.

**Track hours of service (HOS)**  
Log drivers' hours through a simple mobile app

**Regulation updates**  
Receive automatic updates on regulations if they change

**Reporting and inspections**  
Run reports on driver logs and simplify compliance with roadside inspections

**Driver support**  
Receive 24/7 driver support for the mobile app



## Driver Vehicle Inspection Report (add-on solution)

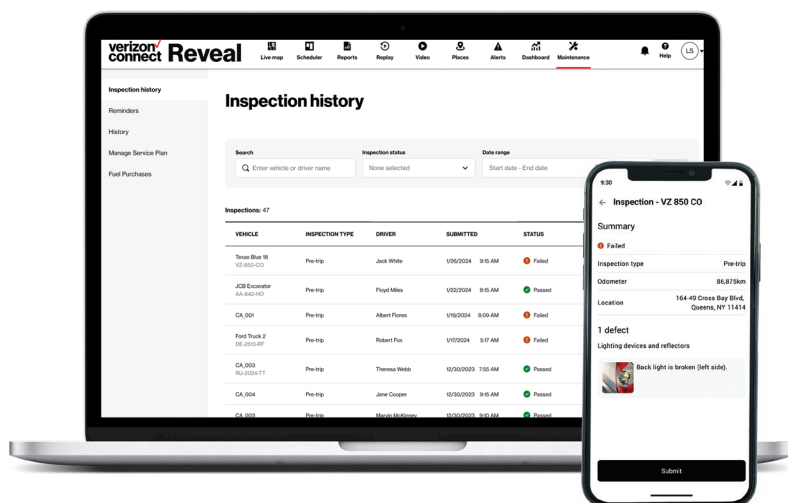
Find and fix vehicle defects quickly.

**Proactive maintenance**  
Inspect vehicles regularly and fix them in a timely manner to help reduce downtime

**Vehicle safety**  
Promote safety by catching issues before they cause major problems on the road

**Compliance**  
Streamline DOT-regulations compliance for vehicles that require inspections

**Electronic DVIRs**  
Eliminate the need for paper driver vehicle inspection reports (DVIRs)



## Hardware

Our hardware devices offer a reliable way to capture and communicate your vehicle data.

### Vehicle Data Device

- Offers frequent plotting rates so your data is up to date
- 4G LTE-enabled, next-generation technology built by us
- Provides easy installation

### Driver ID and key fobs

- Know which driver drove which vehicle on what day with a unique key fob
- Useful for fleets where drivers change vehicles throughout the day

### Equipment Asset Tracker

- Small device with easy self-installation
- Able to be upgraded over the air
- Five-year battery life backup for powered device<sup>1</sup>
- 10-year battery life for nonpowered device<sup>1</sup>

## Why choose Verizon Connect

Verizon Connect is your partner in the fleet management journey with a commitment to bringing customers innovative, meaningful solutions.

### We're backed by the Verizon network

A dependable network is critical to getting accurate fleet data when you need it. You can trust that our software is backed by the fast and reliable Verizon network.

### We're one of the largest providers in the world

Being big is a benefit when it comes to choosing a technology partner. We have the support teams, research and development funding, and security backing to sustain a long-term plan and product roadmap for our customers.

**To learn more, call us at 866.844.2235  
or visit [verizonconnect.com](http://verizonconnect.com) to schedule  
a free product demo.**



1. Battery life is estimated for use under optimal conditions. Factors such as low network signal strength, obstacles and temperature can reduce battery life.